



10409 MEECH AVENUE, CLEVELAND, OH, U.S.A. 44105  
(1) 216-641-8310 • FAX: (1) 216-441-2459

# LPH LOAD BANK

150-300 KW

## 150-300 KW PORTABLE LOAD BANK

- Portable, for Load Testing at Multiple Sites
- Compact, Easy to Transport and Operate
- Large Load Capacity – up to 300 KW
- Rugged Aluminized Steel Enclosure with Casters
- Convenient Operator Controls with Digital Metering Standard



**T**he Avtron Model LPH Load Bank is a portable, self-contained unit that simulates electrical loads. It is ideal for routine load testing of standby diesel generating systems or for factory production line testing of (UPS) Uninterruptible Power Supplies, turbines, or engine generator sets. This model provides resistive loading up to 300 KW at 400 VAC, 50 HZ in a convenient, and easy-to-use package.

The load bank features horizontal air discharge to provide a low profile design for easy entry into areas such as parking garages. The unit is simple to set up and operate by a single technician, saving valuable time in the field.

The Model LPH load bank incorporates state-of-the-art design features, including a heavy gauge aluminized steel enclosure, continuously supported resistor elements on stainless steel rods, and an industrial blower. Legendary Avtron quality combined with simple operation and maintenance will provide years of trouble free service.

*The Avtron Model LPH Load Bank is ideal for routine testing and maintenance of AC power sources such as emergency stand-by generators and UPS systems.*

*Avtron's extensive load bank products are solid performers and are used the world over at thousands of sites.*

*For total support and information on Avtron's products, please contact your Avtron sales representative at (216) 641-8310.*

## LPH LOAD CAPACITY RATINGS

Total Load KW	Voltage	Load Step Resolution KW
150	400 VAC	5 KW
300	400 VAC	5 KW

### LOAD BANK SPECIFICATIONS

**CONSTRUCTION:** A rugged aluminized steel enclosure with screened inlet and exhaust openings houses the LPH load bank. Two fixed and two lockable swivel casters provide mobility. Lifting eyes, forklift channels, and tie-down hooks are standard.

**CONTROL POWER:** The Model LPH load bank requires control power of 120 VAC, 1-Phase, which is derived by a control transformer connected to the blower circuit.

**COOLING:** The resistive elements are air-cooled by an integrally mounted three-phase blower (300 KW) or a single-phase blower (150 KW unit).

**CONTROLS:** The operator control panel includes a MASTER LOAD ON-OFF switch, load step ON-OFF industrial toggle switches, BLOWER ON-OFF push buttons with a BLOWER FAILURE light.

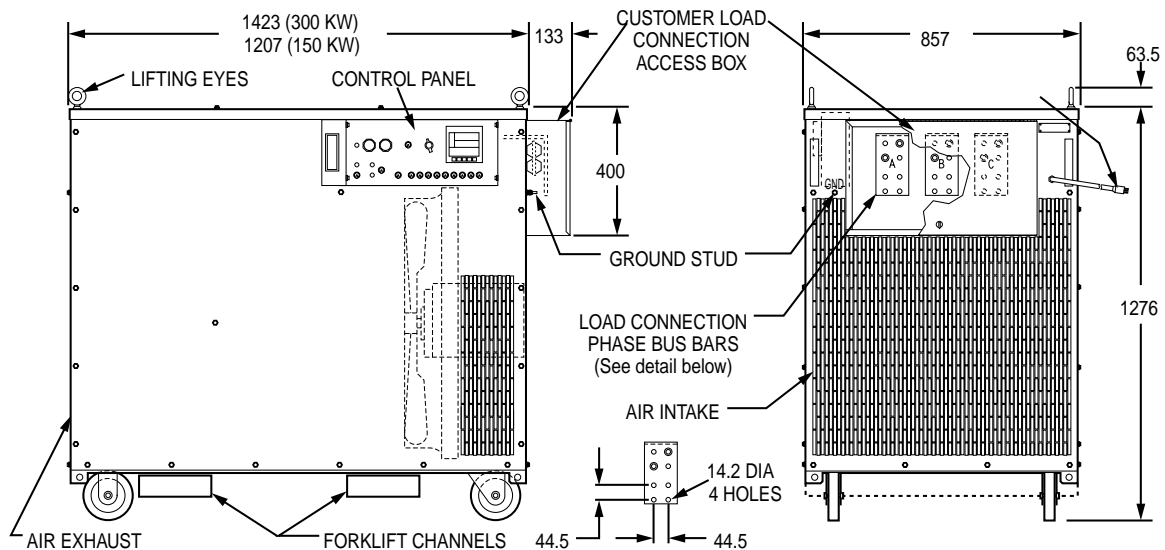
**METERING:** A digital power metering unit to measure volts, amps, frequency, and KW is standard.

**SAFETY CIRCUITS:** The Model LPH load bank features branch circuit fusing on all load steps. Motor overload protection, overtemperature protection and cooling air loss protection are also provided.

**WEIGHT:** Approximately 360 kg (300 KW)  
 Approximately 270 kg (150 KW)

#### OPTIONS:

- Vinyl Storage Dust Cover
- Optional 400 Hz or DC Designs Also Available



All dimensions are in millimeters  
 Specifications subject to change without notice.  
 Printed in U.S.A. Rev.